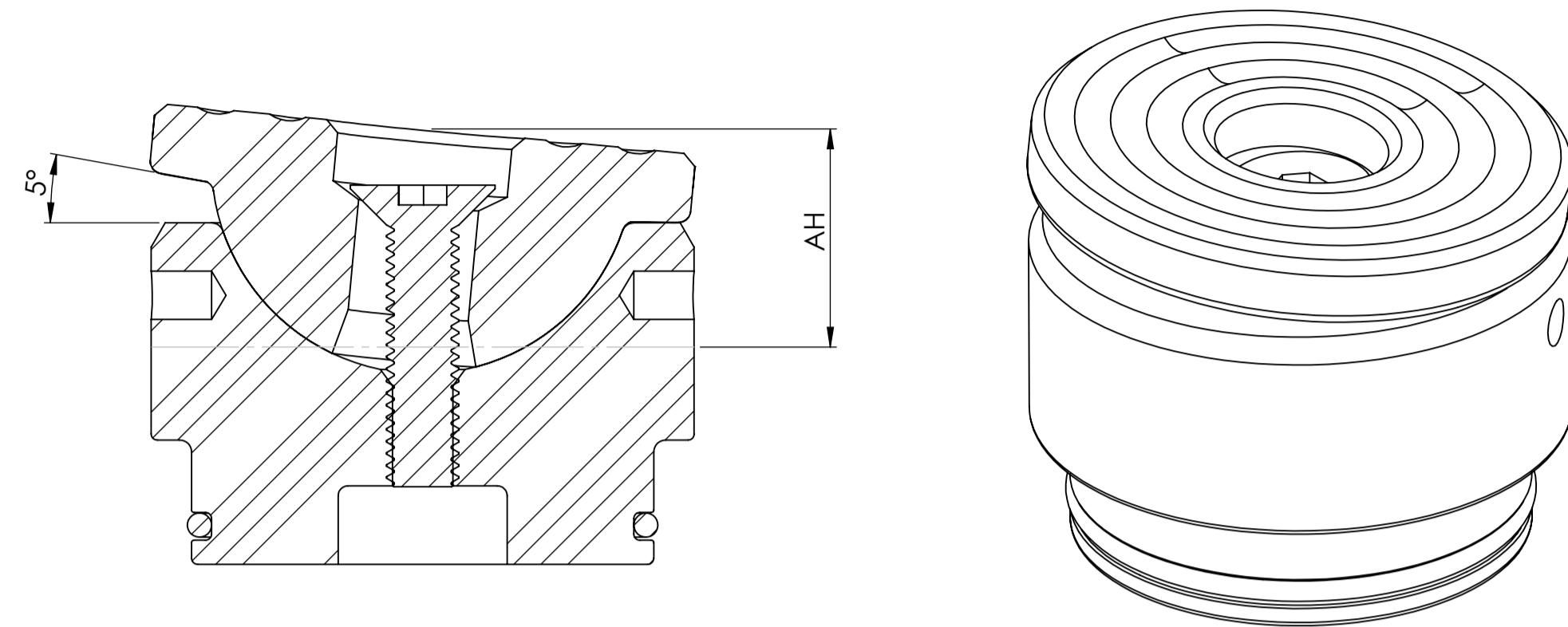


Tilted Saddle For Kompakt/Kombi Solid Piston



AH=Added Height compared to the standard pistonhead

Model	AH	Art No
1530/1550/3030	10,5	215202
3475	18	215203
6255	20	215204

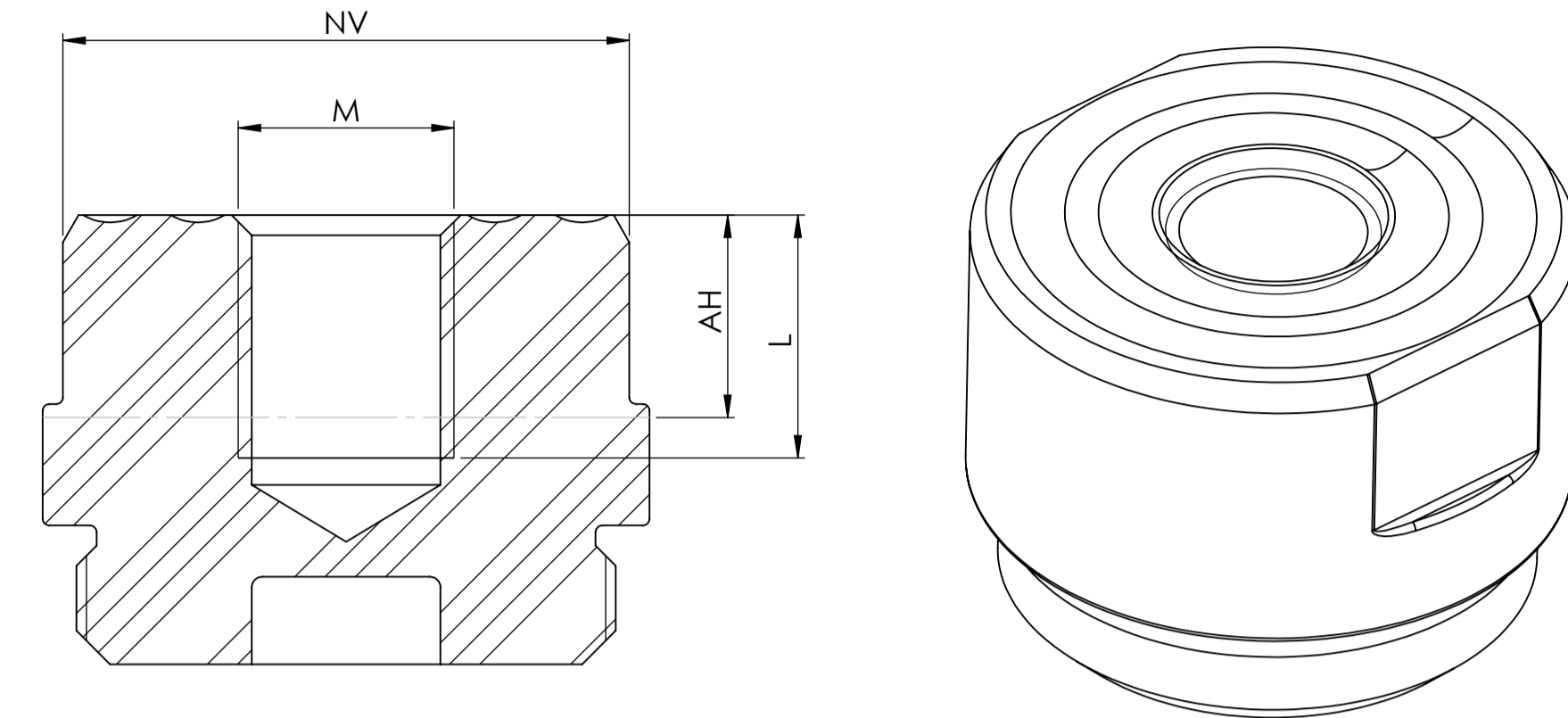
Note!

Use circlip pliers to remove the standard piston heads.

The tilted saddle is installed by pressing it down while simultaneously screwing it in. The O-ring locks it in place. It should always be used if any angled load occurs, up to 5 degrees.

The extended pistonhead is installed by screwing it down.
IMPORTANT: The piston head must bottom out completely. The pistonhead is not designed to carry load on the thread.

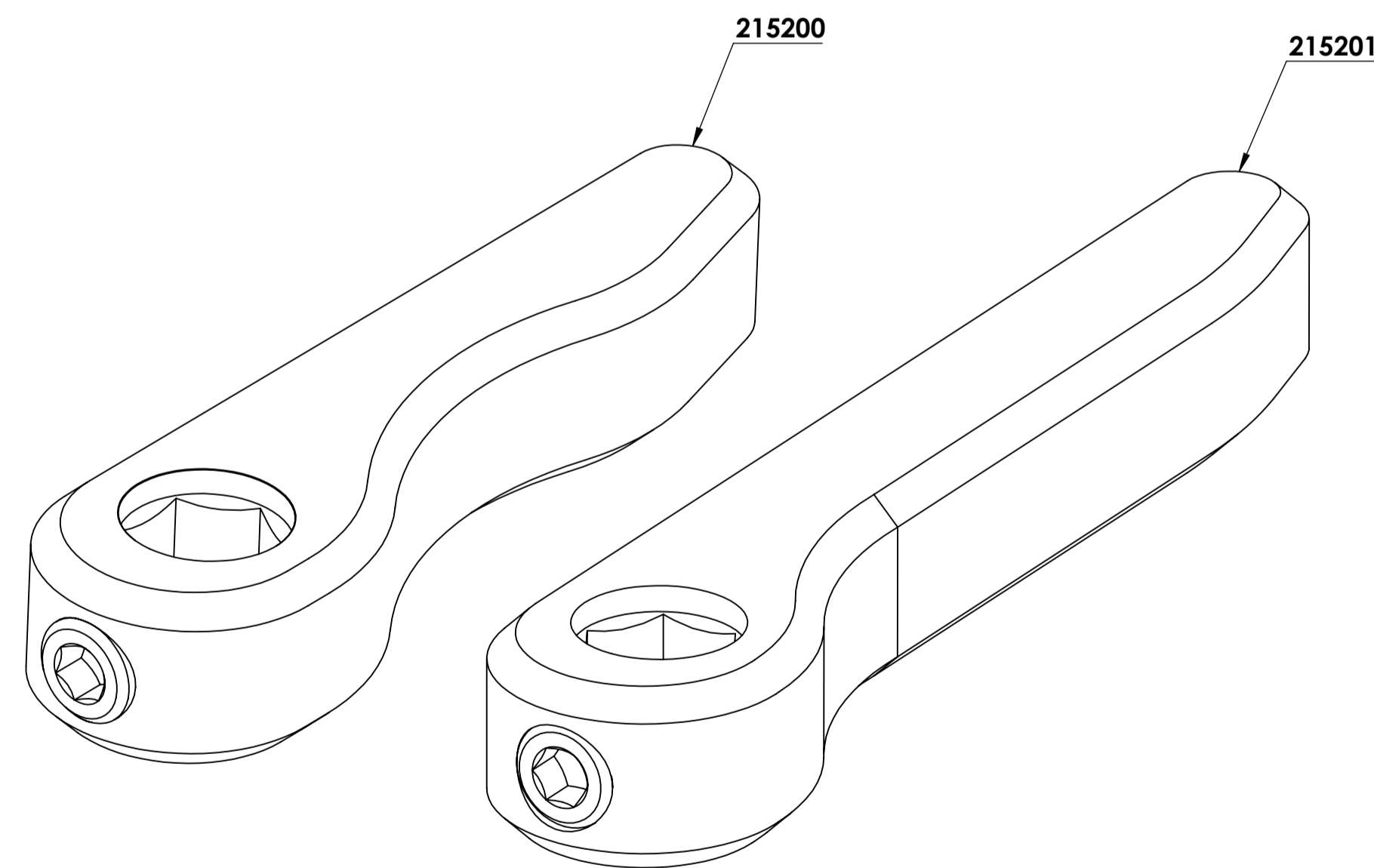
Extended Piston Head For Kompakt/Kombi Solid Piston



AH=Added Height compared to the standard pistonhead

Model	AH	L	M	NV	Art No
1530/1550/3030	10	11	M12	28 mm	215022
3475	15	18	M16	42 mm	215026
6255	15	18	M16	55	215030

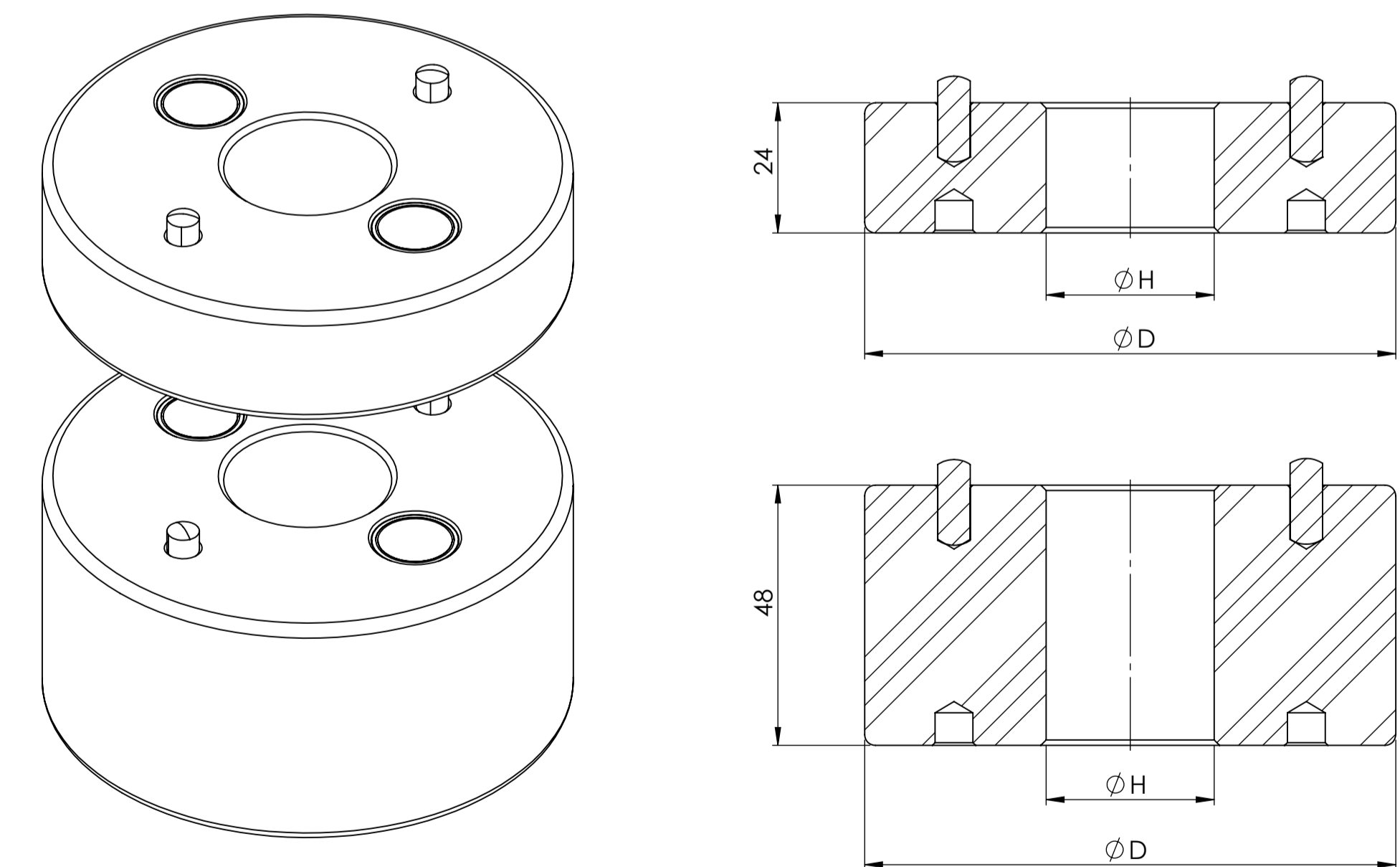
Release knob compatible with all Simson Jacks



Note!

The release knob is primarily intended for use when the jacks are stationary, that is, during repetitive operations that involve no risk of being pinched for the operator. The release knob is designed for easy installation on existing relief screws. When working under load, always use the pumpshaft instead.

Magnetic Hole Spacers With Guide Pins



Model	H	D	Art No
1530/1550/1575/1030H/1050H/1075H, 1330/1350/1375/0830H/0850H/0875H	22	70	215309
3030/2325H/2025H/2530	31	98	215310